

# MTA-AH-HD

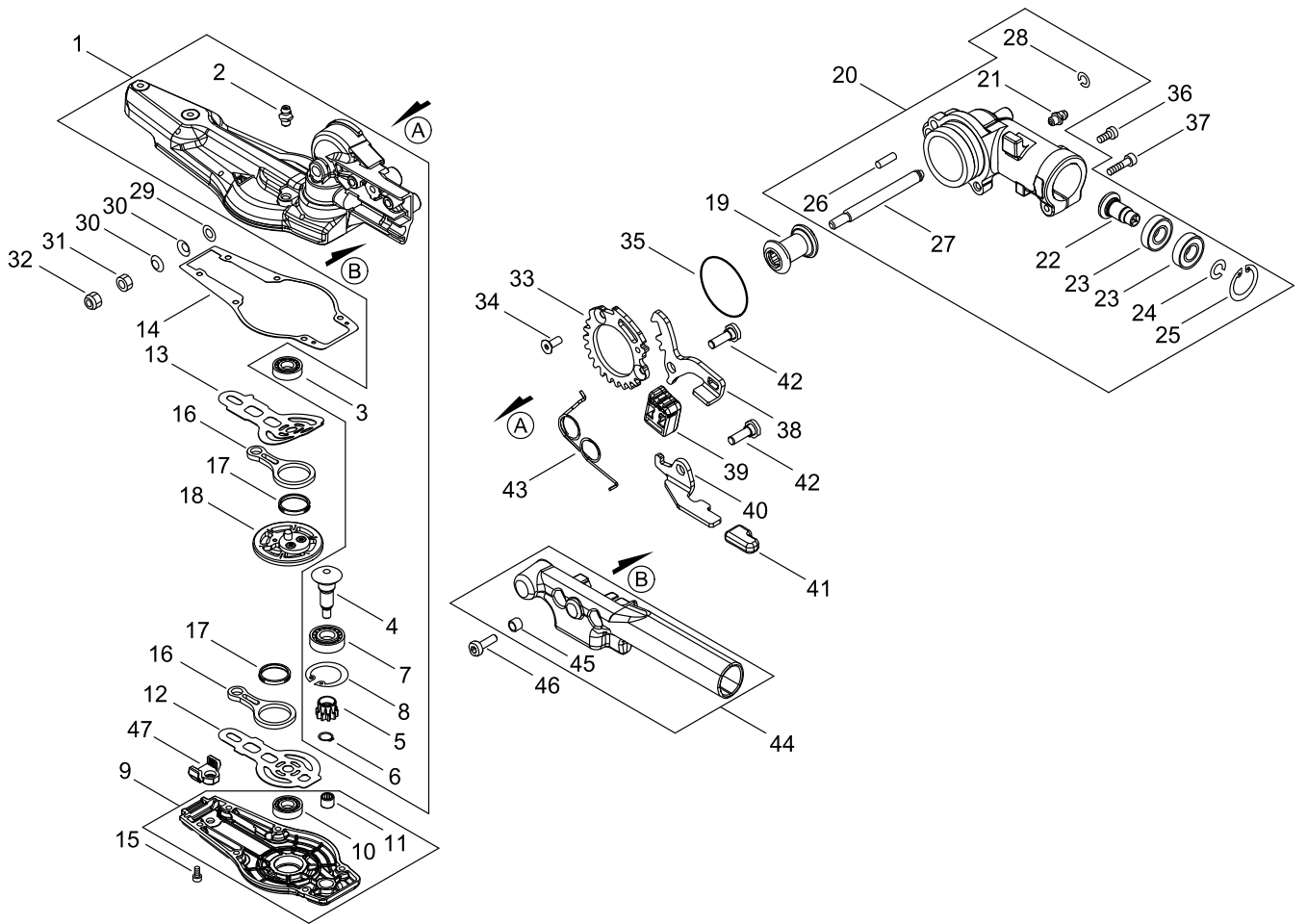
Published:03/13/2018

## TABLE OF CONTENTS

---

GEAR CASE.....	1
CUTTING BLADE.....	3
MAIN PIPE.....	5
ACCESSORIES.....	7

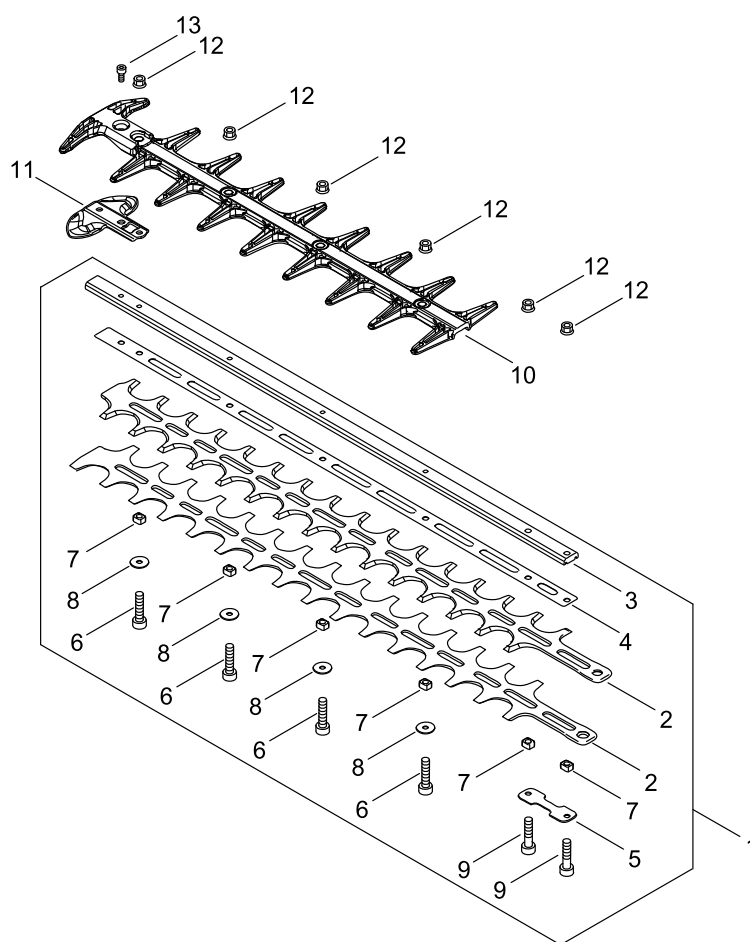
GEAR CASE



## GEAR CASE

KEY NO	LV(+)	Part No	Description	Qty	Standard	Comment
1		P100-003620	CASE,GEAR ASY	1		
2	+	V187-000080	GREASE NIPPLE	1		
3	+	900800-00608	BEARING, BALL 608	1	608	
4	+	V655-000110	SHAFT,PINION	1		
5	+	V650-000730	GEAR,SPUR	1		
6	+	900701-00008	RING, RETAINING(EX)	1	CS-8	
7	+	900800-06001	BEARING, BALL 6001	1	6001	
8	+	900702-00028	CIRCLIP 28	1	CR-28	
9		P100-003630	LID ASY, GEARCASE	1		
10	+	900800-00608	BEARING, BALL 608	1	608	
11	+	V551-000000	BEARING,NEEDLE 6	1	HK0609FM	
12		V150-004310	PLATE,EYE	1	T0.5	
13		V150-004320	PLATE,EYE	1	T0.5	
14		V110-000200	GASKET,GEAR CASE	1	T0.3	
15		V804-000050	BOLT, TORX 4	6	TB-4*12 10.9	
16		C532-000530	ROD, CONNECTING	2		
17		V572-000000	BEARING, NEEDLE	2		
18		V060-000130	GEAR,SPUR	1		
19		P100-003640	GEAR,BEVEL	1		
20		P100-005380	CASE,GEAR ASY	1		
21	+	V187-000080	GREASE NIPPLE	1		
22	+	V651-001100	GEAR,BEVEL	1		
23	+	900857-06901	BEARING, BALL 6901	2	6901LLU	
24	+	900706-00012	CIRCLIP 12	1	WR-12	
25	+	900702-00024	CIRCLIP 24	1	CR-24	
26	+	V623-000120	PIN,STRAIGHT 5	1	L15.5	
27	+	C534-001100	SHAFT, GEAR	1		
28	+	92411-08000	RING	1	WR-8	
29		900603-00006	WASHER 6	1	6.5*13*1	
30		V347-000030	CONE WASHER	2		
31		900502-00006	NUT 6 (3N)	1	3N6	
32		900560-00006	NUT, LOCK	1	6	
33		C465-000040	RESETTER, LATCH	1		
34		900175-05012	BOLT, H.S.H	2	5*12	
35		900724-00035	O-RING 35	1	S-35	
36		V805-000130	BOLT, TORX 5	1	TB-5*10 10.9	
37		V805-000170	BOLT, TORX 5	1	TB-5*25 10.9	
38		C661-000210	LEVER, RELEASE	1		
39		V494-001070	CAP	1		
40		C661-000220	LEVER, RELEASE	1		
41		V494-000891	CAP	1		
42		V204-000580	PIN RATCHET	2		
43		V452-001740	SPRING,TORSION	1		
44		C403-000880	GRIP, HANDLE	1		
45	+	131045-28230	COLLAR	2		
46		V805-000150	BOLT, TORX 5	2	TB-5*16 10.9	
47		V541-000620	SEAL	1		

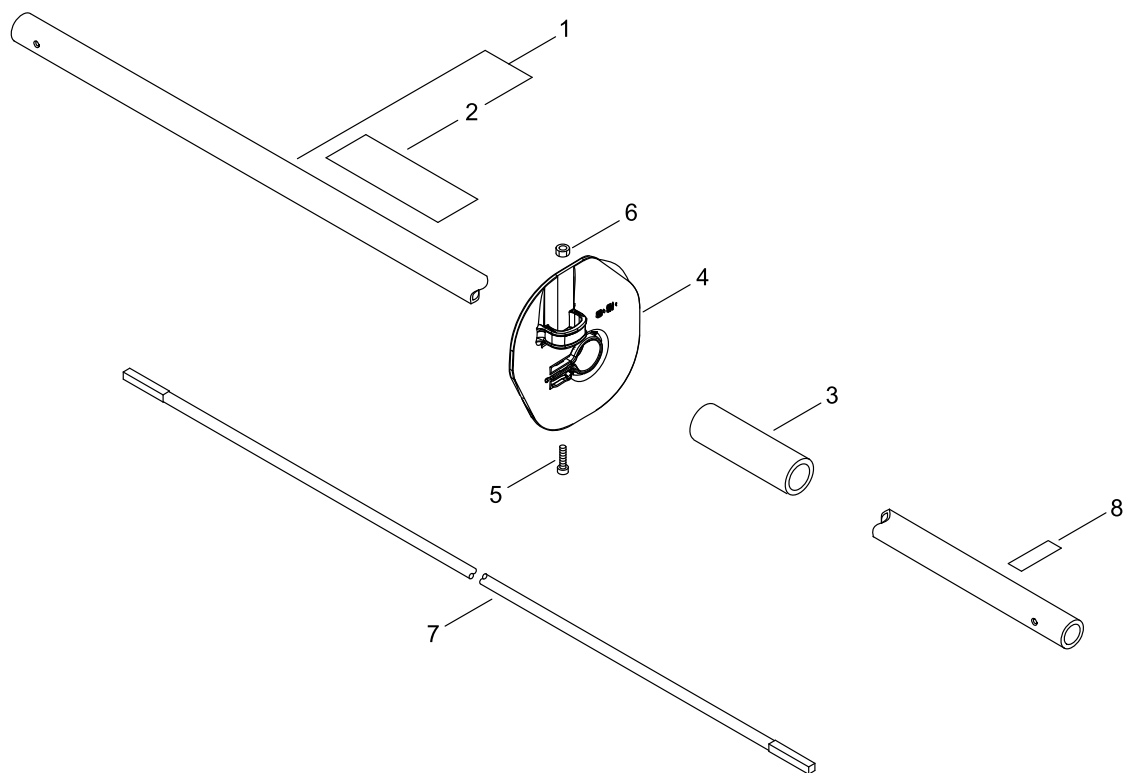
# CUTTING BLADE



## CUTTING BLADE

KEY NO	LV(+)	Part No	Description	Qty	Standard	Comment
1		X041-000630	CUTTER,ASM	1		
2	+	X411-001360	CUTTER	2		
3	+	X425-001030	SUPPORT,CUTTER	1		
4	+	X425-001040	SUPPORT,CUTTER	1		
5	+	V150-004330	PLATE,EYE	1		
6	+	V805-000170	BOLT, TORX 5	4	TB-5*25 10.9	
7	+	V353-000250	COLLAR	6	9*7.45*5.3	
8	+	V303-000290	WASHER	4		
9	+	V805-000180	BOLT, TORX 5	2	TB-5*30 12.9	
10		X431-000250	BLUNT	1		
11		E278-000311	PROTECTOR	1	NEW-SHC	
12		92108-05000	NUT, FLANGE	6		
13		V805-000120	BOLT, TORX 5	1	TB-5*8 10.9	

# MAIN PIPE

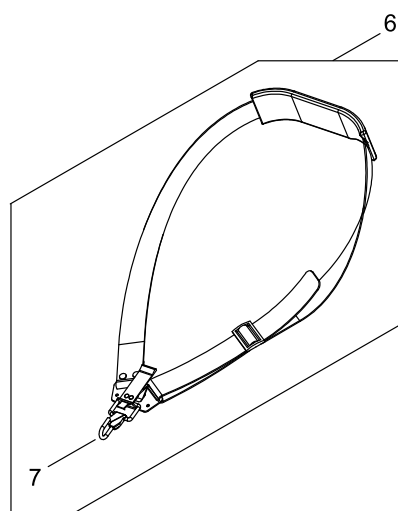
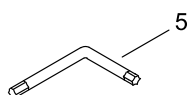
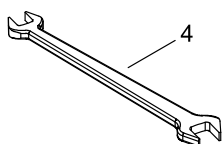
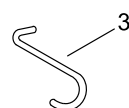
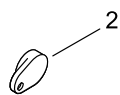
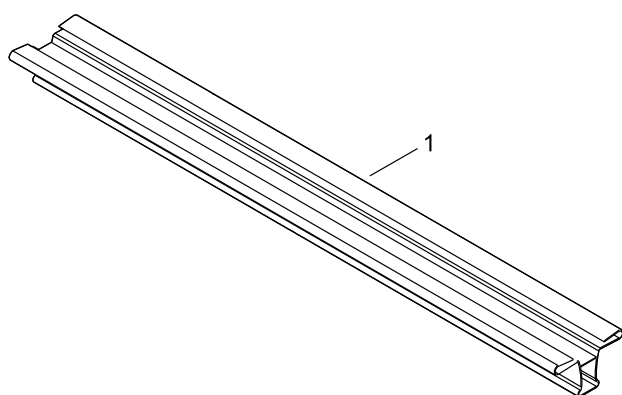


## MAIN PIPE

KEY NO	LV(+)	Part No	Description	Qty	Standard	Comment
1		P100-004870	MAIN PIPE ASY	1		
2	+	890617-12361	LABEL, CAUTION	1		
3		C403-000100	GRIP,HANDLE	1		
4		C440-000022	GUARD,HAND	1	BLADE HOLD-DOWN	
5		V805-000160	BOLT, TORX 5	1	TB-5*20 10.9	
6		900500-00005	NUT 5	1	5	
7		C506-000590	SHAFT, FLEXIBLE	1		
8		890152-04930	LABEL, CAUTION	1		



# ACCESSORIES



## ACCESSORIES

KEY NO	LV(+)	Part No	Description	Qty	Standard	Comment
1		X495-000800	SCABBARD,BLADE	1		
2		C525-000012	CAP,MAIN PIPE	1	25MM PIPE	
3		C649-000121	HOOK	1	8 DEGREE BEND	
4		895112-00330	SPANNER 8*10	1		
5		X605-000170	TOOL,L WRENCH	1		
6		C062-000390	STRAP ASSY	1		
7	+	C649-000200	HOOK	1		

## NUMERICAL PARTS INDEX

Part No	Part description	Page	Part No	Part description	Page	Part No	Part description	Page
131045-2-8230	COLLAR	2	C506-00-0590	SHAFT, FLEXIBLE	6	V452-00-1740	SPRING,TORSION	2
890152-0-4930	LABEL, CAUTION	6	C525-00-0012	CAP,MAIN PIPE	8	V494-00-0891	CAP	2
890617-1-2361	LABEL, CAUTION	6	C532-00-0530	ROD, CONNECTING	2	V494-00-1070	CAP	2
895112-0-0330	SPANNER 8*10	8	C534-00-1100	SHAFT, GEAR	2	V541-00-0620	SEAL	2
900175-0-5012	BOLT, H.S.H	2	C649-00-0121	HOOK	8	V551-00-0000	BEARING,NEEDLE 6	2
900500-0-0005	NUT 5	6	C649-00-0200	HOOK	8	V572-00-0000	BEARING, NEEDLE	2
900502-0-0006	NUT 6 (3N)	2	C661-00-0210	LEVER, RELEASE	2	V623-00-0120	PIN,STRAIGHT 5	2
900560-0-0006	NUT, LOCK	2	C661-00-0220	LEVER, RELEASE	2	V650-00-0730	GEAR,SPUR	2
900603-0-0006	WASHER 6	2	E278-00-0311	PROTECTOR	4	V651-00-1100	GEAR,BEVEL	2
900701-0-0008	RING, RETAINING (EX)	2	P100-00-3620	CASE,GEAR ASY	2	V655-00-0110	SHAFT,PINION	2
900702-0-0024	CIRCLIP 24	2	P100-00-3630	LID ASY, GEARCASE	2	V804-00-0050	BOLT, TORX 4	2
900702-0-0028	CIRCLIP 28	2	P100-00-3640	GEAR,BEVEL	2	V805-00-0120	BOLT, TORX 5	4
900706-0-0012	CIRCLIP 12	2	P100-00-4870	MAIN PIPE ASY	6	V805-00-0130	BOLT, TORX 5	2
900724-0-0035	O-RING 35	2	P100-00-5380	CASE,GEAR ASY	2	V805-00-0150	BOLT, TORX 5	2
900800-0-0608	BEARING, BALL 608	2	V060-00-0130	GEAR,SPUR	2	V805-00-0160	BOLT, TORX 5	6
900800-0-6001	BEARING, BALL 6001	2	V110-00-0200	GASKET,GEAR CASE	2	V805-00-0170	BOLT, TORX 5	2
900857-0-6901	BEARING, BALL 6901	2	V150-00-4310	PLATE,EYE	2	V805-00-0170	BOLT, TORX 5	4
92108-05-000	NUT, FLANGE	4	V150-00-4320	PLATE,EYE	2	V805-00-0180	BOLT, TORX 5	4
92411-08-000	RING	2	V150-00-4330	PLATE,EYE	4	X041-00-0630	CUTTER,ASM	4
C062-00-0390	STRAP ASSY	8	V187-00-0080	GREASE NIPPLE	2	X411-00-1360	CUTTER	4
C403-00-0100	GRIP,HANDLE	6	V204-00-0580	PIN RATCHET	2	X425-00-1030	SUPPORT,CUTTER	4
C403-00-0880	GRIP, HANDLE	2	V303-00-0290	WASHER	4	X425-00-1040	SUPPORT,CUTTER	4
C440-00-0022	GUARD,HAND	6	V347-00-0030	CONE WASHER	2	X431-00-0250	BLUNT	4
C465-00-0040	RESETTER, LATCH	2	V353-00-0250	COLLAR	4	X495-00-0800	SCABBARD,BLADE	8

## NUMERICAL PARTS INDEX

Part No	Part description	Page
X605-00-0170	TOOL,L WRENCH	8